

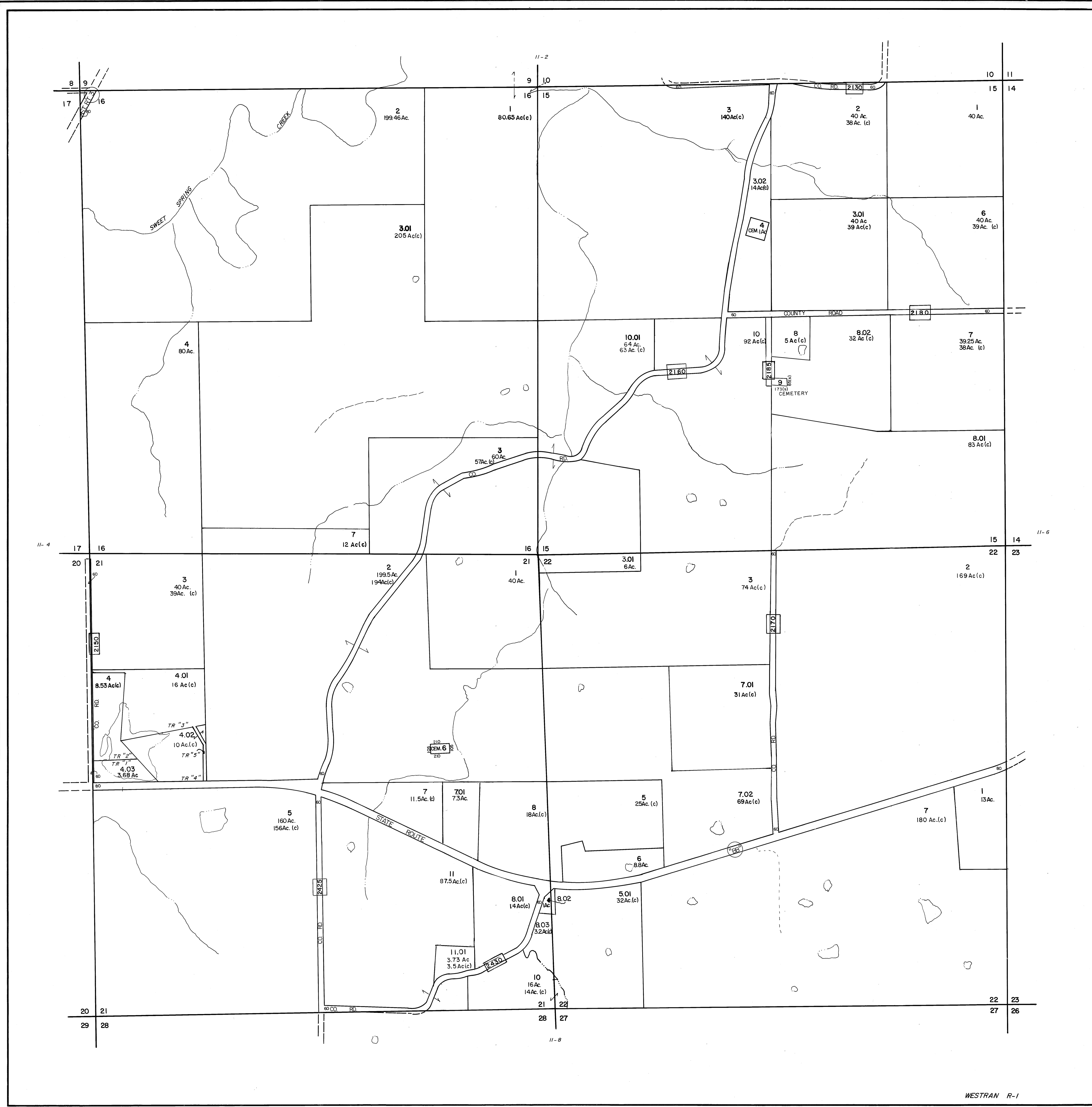
PLAN HOLD CORPORATION - IRVINE, CALIFORNIA
REORDER BY NUMBER 078AR
PUBLISHED EDGE OF PRINT ON THIS LINE

PLAN HOLD CORPORATION - IRVINE, CALIFORNIA
REORDER BY NUMBER 078AR
PUBLISHED EDGE OF PRINT ON THIS LINE

PLAN HOLD CORPORATION - IRVINE, CALIFORNIA
REORDER BY NUMBER 078AR
PUBLISHED EDGE OF PRINT ON THIS LINE

PLAN HOLD CORPORATION - IRVINE, CALIFORNIA
REORDER BY NUMBER 078AR
PUBLISHED EDGE OF PRINT ON THIS LINE

PLAN HOLD CORPORATION - IRVINE, CALIFORNIA
REORDER BY NUMBER 078AR
PUBLISHED EDGE OF PRINT ON THIS LINE



WESTRAN R-1

OWNERSHIP MAP
RANDOLPH COUNTY, MISSOURI
 PREPARED UNDER THE DIRECTION OF
STATE TAX COMMISSION OF MISSOURI
 AND
RANDOLPH COUNTY TAX ASSESSOR
 PREPARED BY
ROBINSON AND ASSOCIATES, INC.
 306 OAK AVE., SPRUCE PINE, N.C. 28777

SCALE: 1"=400'
 DATE OF MAP MARCH 16, 1981
 DATE OF PHOTOGRAPHY 1978
 AERIAL PHOTO NO. 178-55-2

SUBD. NO.	SUBDIVISION NAME	PLAT BOOK	PAGE

STATE LINE	AREA (FROM DEED)	10.5Ac.
COUNTY LINE	AREA (CALCULATED)	10.5Ac.(c)
CORPORATION LINE	DIMENSION (FROM DEED)	16.5
DISTRICT LINE	DIMENSION (CALCULATED)	66'(s)
ROAD R/W	SUBDIVISION LOT NUMBER	23
TOWNSHIP & RANGE LINES	PARCEL NUMBER	45
RAILROAD R/W	WATER	
PROPERTY LINE	INTERSTATE HIGHWAY	55
LAND HOOK	U. S. HIGHWAY	53
SECTION LINE	STATE HIGHWAY	53
INTERIOR OR ORIGINAL TRACT LINE	COUNTY HIGHWAY	33
BLOCK LIMIT (WHERE APPLICABLE)	ROADS, STREETS, CHURCHES, ETC. BY NAME	2 1/2
	SECTION CORNERS	11 1/2

6	5	4	3	2	1
03	02	01			
7	8	9	10	11	12
18	17	16	15	14	13
04	05	06			
19	20	21	22	23	24
30	29	28	27	26	25
09	08	07			
31	32	33	34	35	36

R16W R15W R14W R13W				
T56N	04	03	02	01
T55N				
T54N	05	06	07	08
T53N				
T52N	12	11	10	9
T51N	13	14	15	16

SECTIONS 15, 16, 21, & 22
 TWP. 53 N. RNG. 15 W.
 33-11-5 -
 MAP NUMBER

DATE	BY	REVISIONS
5/1/81	R.B.A.	CHANGES OR ADDITIONS